

H Cadherin (CDH13) Antibody (N-term)
Affinity Purified Rabbit Polyclonal Antibody (Pab)
Catalog # AP1434a**Specification**

H Cadherin (CDH13) Antibody (N-term) - Product Information

Application	WB, FC, IHC-P,E
Primary Accession	P55290
Reactivity	Human
Host	Rabbit
Clonality	Polyclonal
Isotype	Rabbit IgG
Antigen Region	146-174

H Cadherin (CDH13) Antibody (N-term) - Additional Information**Gene ID** 1012**Other Names**

Cadherin-13, Heart cadherin, H-cadherin, P105, Truncated cadherin, T-cad, T-cadherin, CDH13, CDHH

Target/Specificity

This H Cadherin (CDH13) antibody is generated from rabbits immunized with a KLH conjugated synthetic peptide between 146-174 amino acids from the N-terminal region of human H Cadherin (CDH13).

Dilution

WB~~1:1000

FC~~1:10~50

IHC-P~~1:50~100

E~~Use at an assay dependent concentration.

Format

Purified polyclonal antibody supplied in PBS with 0.09% (W/V) sodium azide. This antibody is purified through a protein A column, followed by peptide affinity purification.

Storage

Maintain refrigerated at 2-8°C for up to 2 weeks. For long term storage store at -20°C in small aliquots to prevent freeze-thaw cycles.

Precautions

H Cadherin (CDH13) Antibody (N-term) is for research use only and not for use in diagnostic or therapeutic procedures.

H Cadherin (CDH13) Antibody (N-term) - Protein Information**Name** CDH13

Synonyms CDHH

Function Cadherins are calcium-dependent cell adhesion proteins. They preferentially interact with themselves in a homophilic manner in connecting cells; cadherins may thus contribute to the sorting of heterogeneous cell types. May act as a negative regulator of neural cell growth.

Cellular Location

Cell membrane {ECO:0000250|UniProtKB:Q9WTR5}; Lipid-anchor, GPI-anchor. Cytoplasm {ECO:0000250|UniProtKB:Q9WTR5}

Tissue Location

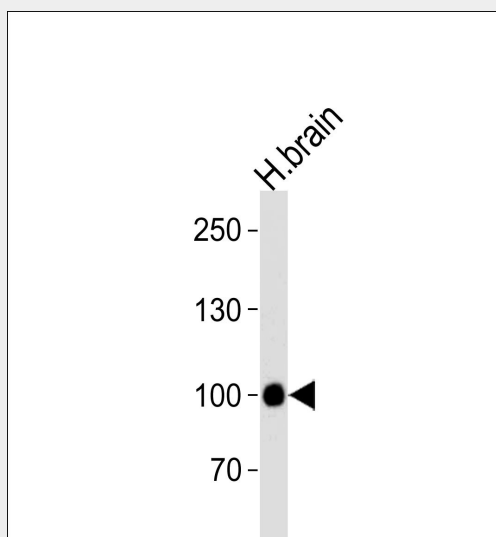
Highly expressed in heart. In the CNS, expressed in cerebral cortex, medulla, hippocampus, amygdala, thalamus and substantia nigra. No expression detected in cerebellum or spinal cord

H Cadherin (CDH13) Antibody (N-term) - Protocols

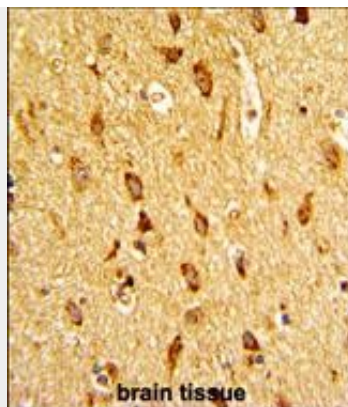
Provided below are standard protocols that you may find useful for product applications.

- [Western Blot](#)
- [Blocking Peptides](#)
- [Dot Blot](#)
- [Immunohistochemistry](#)
- [Immunofluorescence](#)
- [Immunoprecipitation](#)
- [Flow Cytometry](#)
- [Cell Culture](#)

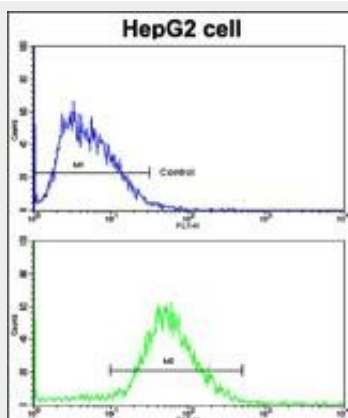
H Cadherin (CDH13) Antibody (N-term) - Images



Western blot analysis of lysate from human brain tissue lysate, using CDH13 Antibody (N-term)(Cat. #AP1434a). AP1434a was diluted at 1:1000 at each lane. A goat anti-rabbit IgG H&L(HRP) at 1:5000 dilution was used as the secondary antibody. Lysate at 35ug per lane.



Formalin-fixed and paraffin-embedded human brain tissue with H Cadherin (CDH13) Antibody (N-term), which was peroxidase-conjugated to the secondary antibody, followed by DAB staining. This data demonstrates the use of this antibody for immunohistochemistry; clinical relevance has not been evaluated.



Flow cytometric analysis of HepG2 cells using H Cadherin (CDH13) Antibody (N-term)(bottom histogram) compared to a negative control cell (top histogram). FITC-conjugated goat-anti-rabbit secondary antibodies were used for the analysis.

H Cadherin (CDH13) Antibody (N-term) - Background

CDH13 is a member of the cadherin superfamily. This protein is a calcium dependent cell-cell adhesion glycoprotein comprised of five extracellular cadherin repeats, a transmembrane region but, unlike the typical cadherin superfamily member, lacks the highly conserved cytoplasmic region. This particular cadherin is a putative mediator of cell-cell interaction in the heart and may act as a negative regulator of neural cell growth.

H Cadherin (CDH13) Antibody (N-term) - References

Qian,Z.R., Mod. Pathol. 20 (12), 1269-1277 (2007)
Tsou,J.A., Mol. Cancer 6, 70 (2007)